

RIVSTAR®

3 Star Rivets Manufacture



Add: No.19 Yanjin Road, Yanqiao Industrial Park,
Wuxi, Jiangsu, China

Tel : 86-510-83571888

Fax: 86-510-83571999

E-mail: sxwx@3starrivet.com

[Http://www. 3starrivet.com](http://www.3starrivet.com)



TS16949
ISO9001(2008)



[WWW. 3STARRIVET.COM](http://WWW.3STARRIVET.COM)



3 STAR HISTORY

Established in 1990, 3 Star Rivets Manufacture is one of the leading manufacturers of riveting technology products in China especially in structural rivet and rivet nut . For the rivet, now our annual production capacity reaches 1.5 billion pieces, within which 80 million are structural rivets. About 90% of our products are exported to Germany, USA, France, Italy, New Zealand, Southeast Asia and other countries. And we have 10 six die& six punch cold forming machine in production of rivet nut and lead to a very high capacity. We have established data file according to the standard of IFI & DIN. We have passed ISO 9001:2000 Quality System Authentication and founded an advanced test center.

The main products are blind rivet, structural rivet and hammer rivet, covering open type, closed type and series products, etc. We manufacture products with material of Aluminium, steel, stainless steel, copper and Monel.

We have advanced equipments imported from Taiwan and Italy, which ensure our high-quality products, e.g. 12 pieces of six-station, 9 pieces of 5-station, 12 pieces of 2-die 4-blow, 27 pieces of nail making machine, 12 pieces of threading, 21 pieces of assembly machine together several testing machines.



RIVET NUT CATALOGUE

		Steel	Stainless Steel	Aluminium	Size	Flat Head	Countersunk	Reduced	Open	Closed	Round Plain	Round Knurled	Full Hex	Half Hex	Page
	RIVSTAR® Premium	●			M4 to M10	●			●			●			8
	RIVSTAR® Premium	●			M4 to M8	●			●					●	8
	RIVSTAR® Premium	●			M4 to M10			●	●			●			8
	RIVSTAR® Premium	●			M4 to M8			●	●					●	8
	RIVSTAR® Premium		●		M4 to M8	●			●			●			9
	RIVSTAR® Premium		●		M4 to M8			●	●			●			9
	RIVSTAR® Premium		●		M4 to M8			●	●					●	9
	RIVSTAR® Premium		●		M4 to M8	●		●						●	9
	RIVSTAR® Premium		●		M5 to M8	●			●						9
	RIVSTAR®	●			M4 to M12	●			●					●	10
	RIVSTAR®	●			M4 to M8			●	●					●	11
	RIVSTAR®	●			M4 to M12	●			●				●		12
	RIVSTAR®	●			M4 to M12			●	●				●		13



RIVET NUT CATALOGUE

		Steel	Stainless Steel	Aluminium	Size	Flat Head	Countersunk	Reduced	Open	Closed	Round Plain	Round Knurled	Full Hex	Half Hex	Page
	RIVSTAR®	•			M3 to M12	•					•				14
	RIVSTAR®	•			M3 to M14		•				•				15
	RIVSTAR®	•			M3 to M14	•					•				16
	RIVSTAR®	•			M3 to M12		•		•			•			17
	RIVSTAR®	•			M3 to M12			•	•			•			18
	RIVSTAR®	•			M3 to M14	•			•			•			19
	RIVSTAR®	•			M3 to M14	•				•		•			20
	RIVSTAR®	•			M3 to M14	•				•	•				21
	RIVSTAR®	•			M3 to M14		•			•	•				22
	RIVSTAR®	•			M3 to M14		•			•		•			23
	RIVSTAR®	•			M3 to M12			•		•		•			24
	RIVSTAR®	•			M4 to M12			•		•				•	25
	RIVSTAR®	•			M4 to M10			•		•			•		26



RIVET NUT CATALOGUE

		Steel	Stainless Steel	Aluminium	Size	Flat Head	Countersunk	Reduced	Open	Closed	Round Plain	Round Knurled	Full Hex	Half Hex	Page
	RIVSTAR®		•		M3 to M12	•				•		•			27
	RIVSTAR®		•		M3 to M12		•			•		•			28
	RIVSTAR®		•		M3 to M12			•		•		•			29
	RIVSTAR®		•		M4 to M12			•		•				•	30
	RIVSTAR®		•		M4 to M12	•				•				•	31
	RIVSTAR®			•	M3 to M12	•						•			32
	RIVSTAR®			•	M3 to M10	•				•		•			33
	RIVSTAR®			•	M3 to M12		•					•			34
	RIVSTAR®			•	M3 to M8			•				•			35
	RIVSTAR®		•		M4 to M10	•						•			36
	RIVSTAR®		•		M3 to M12		•					•			37



RIVSTAR® — Application of rivet nuts

Rivet nut fastening and assembly technology in the following areas are widely used:

- Automotive, Motore, Safety belt
- Cabinet
- Machinery
- Equipment
- Tumiture
- Construction industry
- Facility, Yatch



RIVSTAR® — Advantage

RIVSTAR® rivet nuts for the assembly of sheet metal parts to provide a great convenience . They are able to plastics, ceramics, and almost all of the metal parts assembled at random . Blind rivet a unilateral installation technology means RIVSTAR® rivet nuts and studs are often several occasions the only fastening solutions : hollow frame , shell , or only from one side into parts. Even if the part surface has been coated or painted over , you can still use RIVSTAR® rivet nuts in either a production process at any stage of installation and after installation without the need for surface treatment.

And weld nuts different , RIVSTAR® rivet nuts and studs will not cause damage to components due to high temperature . Also, because there is no harmful gases and no fire hazards , to ensure the safety of the producer .

And compared to all other types of fasteners , less time-consuming installation RIVSTAR® products , low cost, has obvious economic advantages.

- No cumbersome installation tool.
- RIVSTAR® rivet nuts and studs connection can not affect the performance in the case repeated.
- Wish to provide threaded connections for parts manufacturers , RIVSTAR® rivet nuts and studs with no risk advantage.

RIVSTAR® — Application Examples



Spools
RIVSTAR®Premium M4
Steel, flat head, knurled
Knurled provide
Strong anti-reverse



Engine Parts
RIVSTAR® M5
Steel, flat head, knurled
Knurled provide
Strong anti-reverse



Weighing Accessories
RIVSTAR® M5
Steel, flat head, knurled
Knurled provide
Strong anti-reverse



Plastic fittings
RIVSTAR® M6
Steel, flat head, knurled
Knurled provide
Strong anti-reverse



Door
RIVSTAR® M6
Steel, flat head, knurled
Knurled provide
Strong anti-reverse



Desk frame
RIVSTAR® M8
Steel, flat head, knurled
Knurled provide
Strong anti-reverse

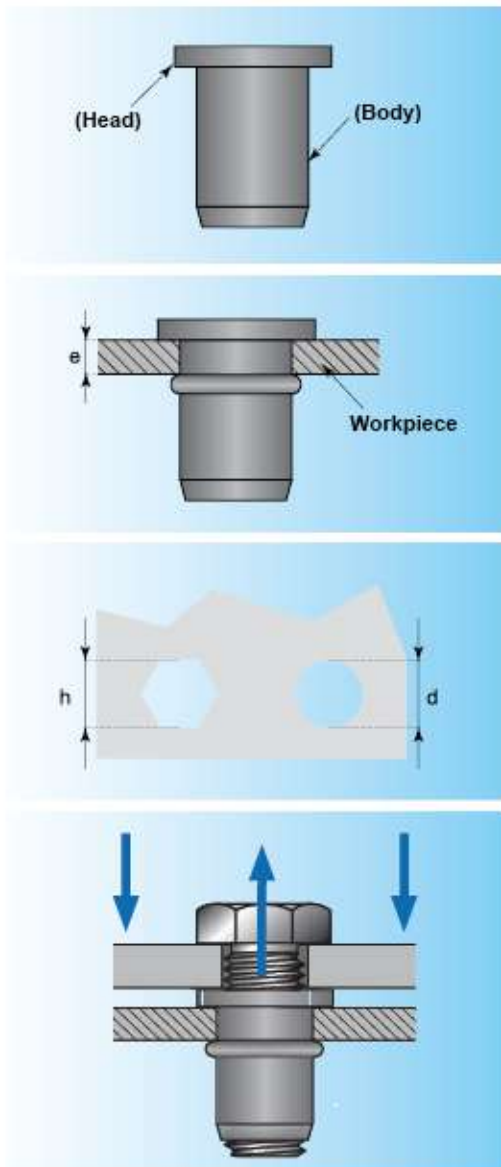
RIVSTAR® — Selection criteria

Technical catalogue

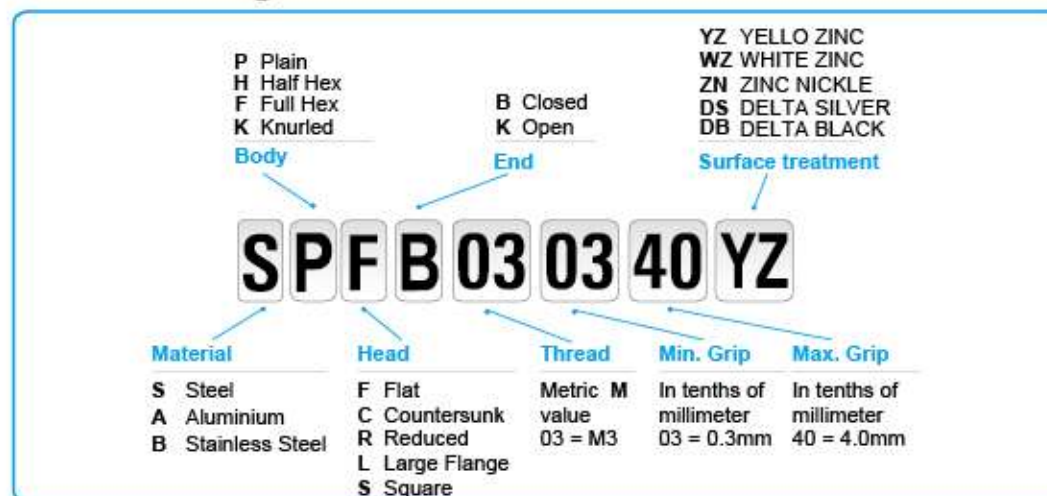
- **(Head)**
Part use RIVSTAR rivet nuts in either a production
- **(Body)**
an still use RIVSTAR rivet nuts
- **(Clamp thickness)**
The thickness of application parts.
- **(Grip range)**
The thickness of application must be between max and min grip range.
- **(Hole dimensions)**
Hmeans the dicneter of hole,hmeans the width of wex
- **(Blind rivet nut materials)**

RIVSTAR @ rivet nut is made of steel, stainless steel or Aluminum.
The material we used has great deformation pperformance and anti-reverse capability, can be applied on different place.
Standard stainless steel rivet nuts is made by 304 or 316 material.
Steel -fit for normal application.
Aluminum -Anti- corrosion ,light
Stainless steel -Anti- corrosion, high temperature resistance.

	RIVSTAR® Stainless Steel	RIVSTAR® Aluminium	RIVSTAR® Steel
M3	4 000	2 500	/
M4	6 800	4 000	/
M5	10 000	5 500	8 100
M6	15 000	8 300	11 500
M8	27 000	13 000	21 000
M10	37 000	20 000	/
M12	54 000	28 000	/



RIVSTAR® Coding Guide



RIVSTAR® Premium

Convenience

3 Star Rivet Manufacture has develop its own stock system of 20 kind of steel rivet nut for common use, which can cover 80% of customers' usage. We keep on simplification of product choice and purchasing, and this would be helpful to stock control of customer.

Availability

All this 36 kind of common use rivet nut are immediately available from stock including steel and stainless steel.

Quality

We have TS 16949 Certificate quality management, produce with high standard.

RIVSTAR® Premium

	Part No	size	Grip range G	Hole Size H+0.1	B	A	Length L	P
	SKFK040530	M4	0.5-3.0	6	9	1.0	11.0	5.8
	SKFK050530	M5	0.5-3.0	7	10	1.0	13.0	7.3
	SKFK060530	M6	0.5-3.0	9	12	1.5	16.0	8.0
	SKFK060355	M6	3.0-5.5	9	12	1.5	17.5	8.2
	SKFK080530	M8	0.5-3.0	11	15	1.5	17.5	11.0
	SKFK083055	M8	3.0-5.5	11	15	1.5	20.0	11.1
	SKFK100735	M10	0.7-3.5	13	16	2.0	19.0	13.9
	SHFK040530	M4	0.5-3.0	6	9.3	1.0	12.5	5.8
	SHFK050530	M5	0.5-3.0	7	10.3	1.0	14.5	7.3
	SHFK060530	M6	0.5-3.0	9	12.3	1.5	17.0	8.0
	SHFK080530	M8	0.5-3.0	11	14.3	1.5	19.0	11.2
	SKRK040530	M4	0.5-3.0	6	7	0.3	10.0	5.8
	SKRK050530	M5	0.5-3.0	7	8	0.3	11.5	7.4
	SKRK060530	M6	0.5-3.0	9	10	0.4	14.0	8.5
	SKRK080530	M8	0.5-3.0	11	12	0.4	15.5	11.1
	SKRK100735	M10	0.7-3.5	13	13.5	0.5	19.5	14.0
	SHRK040530	M4	0.5-3.0	6	7.5	0.3	11	6.0
	SHRK050530	M5	0.5-3.0	7	8.7	0.3	12	7.5
	SHRK060530	M6	0.5-3.0	9	11	0.4	14	8.3
	SHRK080530	M8	0.5-3.0	11	13	0.4	15.5	11.3

unit: millimeter

The standard supplied surface treatment is 8µ Zinc with clear passivate (ROHS compliant) . Other finishes are available on request.

Stainless steel 304

	Part No	size	Grip range G		Hole Size D	B	T±0.15	A	Length L	P
			MIN	MAX						
	BKFK040530	M4×11	0.5	3.0	6	5.95	1.0	9	11	5.8
	BKFK050530	M5×13	0.5	3.0	7	6.95	1.0	10	13	7.3
	BKFK060530	M6×16	0.5	3.0	9	8.95	1.5	13	16	8.0
	BKFK060530	M8×17.5	0.5	3.0	11	10.95	1.5	16	17.5	11
	BKRK040530	M4×11	0.5	3.0	6	5.95	0.3	6.7	11	5.8
	BKRK050530	M5×13	0.5	3.0	7	6.95	0.3	8.0	13	7.4
	BKRK060530	M6×14	0.5	3.0	9	8.95	0.4	10.0	14	8.5
	BKRK080530	M8×18	0.5	3.0	11	10.95	0.4	12.0	18	11.0
	BHRK040530	M4×11	0.5	3.0	6	5.95	0.3	7.5	11	6.0
	BHRK050530	M5×13	0.5	3.0	7	6.95	0.3	8.7	13	7.5
	BHRK060530	M6×14.5	0.5	3.0	9	8.95	0.4	11	14.5	8.3
	BHRK080530	M8×17	0.5	3.0	11	10.95	0.4	13	17	11.3
	BHFK040530	M4×11	0.5	3.0	6	5.95	1.0	9	11	5.8
	BHFK050530	M5×13	0.5	3.0	7	6.95	1.4	10	13	7.3
	BHFK060530	M6×17	0.5	3.0	9	8.95	1.4	13	17	8.0
	BHFK080530	M8×18	0.5	3.0	11	10.95	1.0	16	18	11
	BPFK050530	M5	0.5	3.0	7	6.9	1	10	13	7.5
	BPFK060530	M6	0.5	3.0	9	8.9	1.5	12	16	8.3
	BPFK080530	M8	0.5	3.0	11	10.9	1.5	15	17	11

Rivstar® premium promise to always has stock available

P value is only for reference

unit: millimeter

The standard supplied surface treatment is 8µ Zinc with clear passivate (ROHS compliant) . Other finishes are available on request.

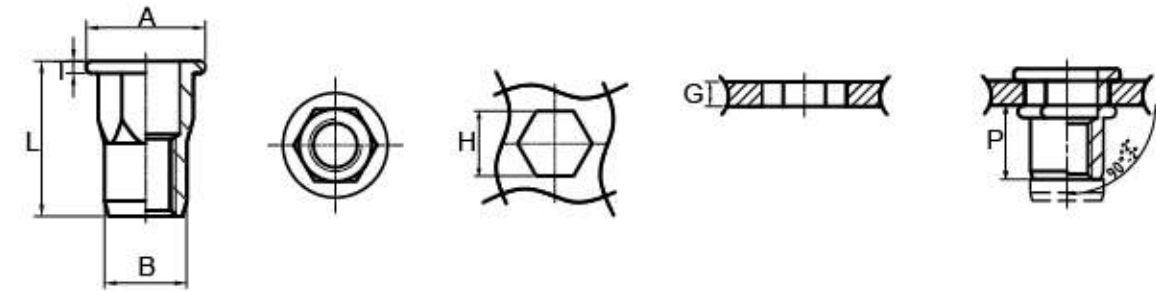
For special applications are available on request.

Rivet Nut

Product Feature:

1. ultimate load bearing
2. can be used on soft material (Aluminum, plastic.....)
3. Increased turning resistance

Half Hex , Flat Head
Material(Steel)



Part No	size	Grip range G		Hole Size H +0.1	B	T±0.15	A	Length L	P
		MIN	MAX						
SHFK040520	M4×11	0.5	2.0	6	5.95	1.0	9.0	11	5
SHFK050530	M5×13	0.5	3.0	7	6.95	1.0	10.0	13	7
SHFK060530	M6×15	0.5	3.0	9	8.95	1.5	13	15	10
SHFK080530	M8×18	0.5	3.0	11	10.95	1.5	16	18	11
SHFK101035	M10×21	1	3.5	13	12.95	2	19	21	13
SHFK121545	M12×28	1.5	4.5	16	15.95	2	23.3	28	17

P value is only for reference

unit: millimeter

The standard supplied surface treatment is 8µ Zinc with clear passivate (ROHS compliant) . Other finishes are available on request.

For special applications are available on request.

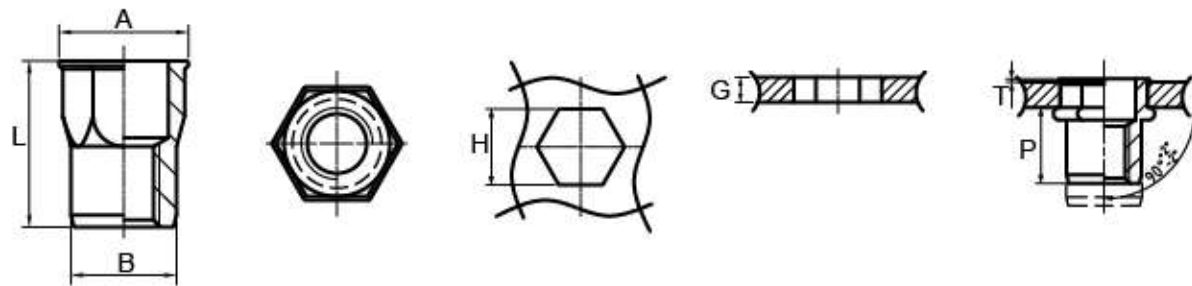
Rivet Nut

Product Feature:

- 1. ultimate load bearing
- 2. can be used on soft material (Aluminum, plastic.....)
- 3. Increased turning resistance

Half Hex , Reduced head

Material(Steel)



Part No	size	Grip range G		Hole Size H +0.1	B	T±0.15	A	Length L	P
		MIN	MAX						
SHRK040530	M4×11	0.5	3.0	6	5.95	0.5	7.5	11	6
SHRK050530	M5×13	0.5	3.0	7	6.95	0.6	8.7	13	7.5
SHRK060530	M6×14	0.5	3.0	9	8.95	0.6	10.9	14	8.5
SHRK080530	M8×18	0.5	3.0	11	10.95	0.7	13.3	18	11.3

P value is only for reference

unit: millimeter

The standard supplied surface treatment is 8µ Zinc with clear passivate (ROHS compliant) . Other finishes are available on request.

For special applications are available on request.

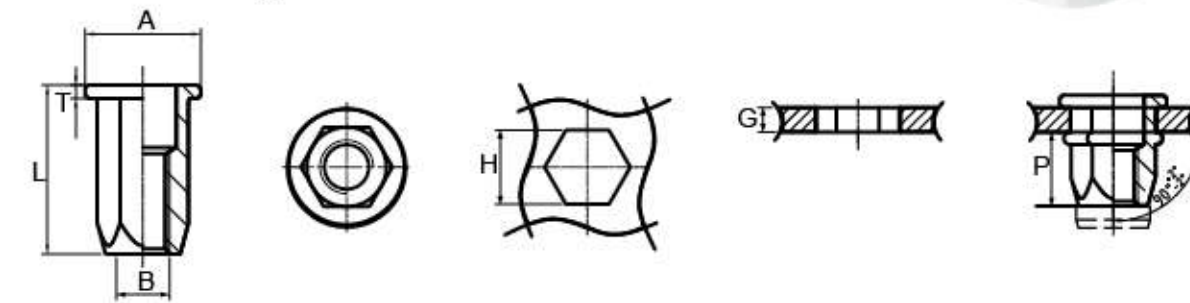
Rivet Nut

Product Feature:

- 1. ultimate load bearing
- 2. can be used on soft material (Aluminum, plastic.....)
- 3. Increased turning resistance

Full Hex , Flat Head

Material(Steel)



Part No	size	Grip range G		B	T±0.15	A	Hole Size H	Length L	P
		MIN	MAX						
SFFK040520	M4×10	0.5	2.0	5.95	1.0	9.0	6	10	5
SFFK050530	M5×14	0.5	3.0	6.95	1.0	10.0	7	14	9
SFFK060530	M6×16	0.5	3.0	8.95	1.5	13	9	16	10
SFFK063055	M6×19	3.0	5.5					19	
SFFK080530	M8×18	0.5	3.0	10.95	1.5	16	11	18	11
SFFK083055	M8×21	3.0	5.5					21	
SFFK101035	M10×23	1.0	3.5	12.95	2	19	13	23	15
SFFK103560	M10×26	3.5	6.0					26	
SFFK121040	M12×27	1	4.0	15.95	2	23	16	27	17

P value is only for reference

unit: millimeter

The standard supplied surface treatment is 8µ Zinc with clear passivate (ROHS compliant) . Other finishes are available on request.

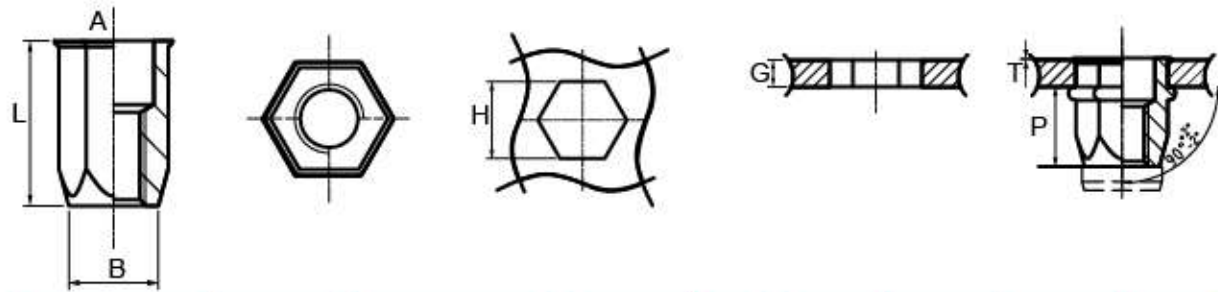
For special applications are available on request.

Rivet Nut

Product Feature:

1. ultimate load bearing
2. can be used on soft material (Aluminum, plastic.....)
3. Increased turning resistance

Full Hex , Reduced
Material(Steel)



Part No	size	Grip range G		Hole Size H±0.1	B	T±0.15	A	Length L	P
		MIN	MAX						
SFRK040530	M4×10	0.5	3	6	5.95	0.5	7.5	12	6.5
SFRK050530	M5×14	0.5	3	7	6.95	0.6	9	14	9.0
SFRK060530	M6×16	0.5	3.0	9	8.95	0.6	11	16	10
SFRK063055	M6×19	3.0	5.5					19	
SFRK080530	M8×18	0.5	3.0	11	10.95	0.7	13.5	18	12.5
SFRK083060	M8×21	3	6.0					21	
SFRK101040	M10×22	1	4.0	13	12.95	0.8	16	22	16
SFRK103060	M10×25	3.0	6.0					25	
SFRK121040	M12×25	1.0	4.0	16	15.95	1.0	18.8	25	16
SFRK104080	M12×28	4.0	8.0					28	

P value is only for reference

unit: millimeter

The standard supplied surface treatment is 8µ Zinc with clear passivate (ROHS compliant) . Other finishes are available on request.

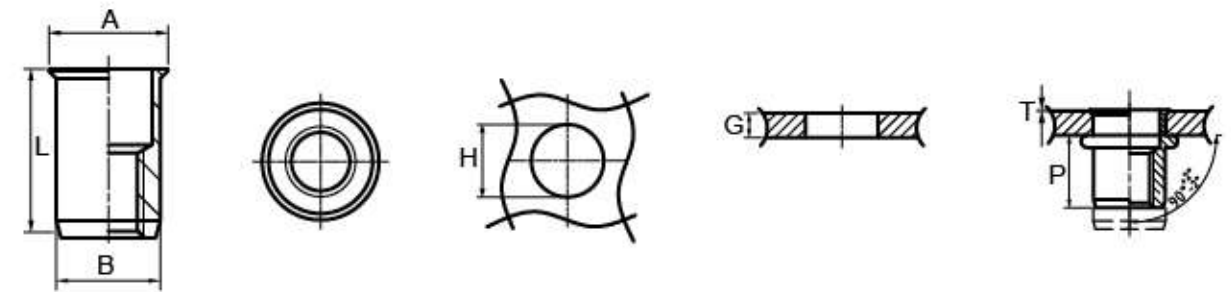
For special applications are available on request.

Rivet Nut

Product Feature:

1. Very low head projection prevents damage to surface of panel
2. can be used on soft material (Aluminum, plastic.....)
3. Increased turning resistance

Round , Plain Flat Head
Material(Steel)



Part No	size	Grip range G		Hole Size D	B	T±0.15	A	Length L	P
		MIN	MAX						
SPRK030715	M3×8	0.7	1.5	5	4.95	0.4	6	8	6
SPRK031530	M3×10	1.5	3.0	5	4.95	0.4	6	10	6
SPRK040525	M4×10	0.5	2.5	6	5.95	0.4	7	10	6
SPRK042540	M4×12	2.5	4.0					12	
SPRK051025	M5×12	1	2.5	7	6.95	0.4	8	12	7.6
SPRK052040	M5×14	2	4					14	
SPRK060830	M6×13	0.8	3.0	9	8.95	0.4	10	13	9
SPRK063045	M6×15	3.0	4.5					15	
SPRK064560	M6×17	4.5	6.0	11	10.95	0.5	12	17	12
SPRK080830	M8×17	0.8	3					17	
SPRK083045	M8×19	3	4.5	13	12.95	0.5	14	19	14.5
SPRK084560	M8×21	4.5	6.0					21	
SPRK100830	M10×21	0.8	3	16	15.95	0.5	17	21	18
SPRK103045	M10×22	3	4.5					22	
SPRK104560	M10×23	4.5	6	17	15.95	0.5	17	23	18
SPRK120830	M12×24	0.8	3					24	
SPRK123045	M12×26	3	4.5	16	15.95	0.5	17	26	18
SPRK124560	M12×27	4.5	6.0					27	

P value is only for reference

unit: millimeter

The standard supplied surface treatment is 8µ Zinc with clear passivate (ROHS compliant) . Other finishes are available on request.

For special applications are available on request.

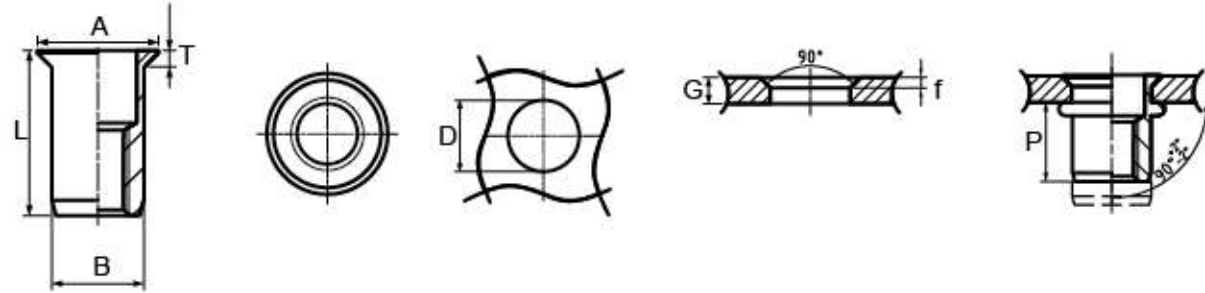
Rivet Nut

Product Feature:

1. Very low head projection prevents damage to surface of panel
2. can be used on soft material (Aluminum, plastic.....)
3. Increased turning resistance

Round, Countersunk

Material(Steel)



Part No	size	Grip range G		Hole Size D	B	f	T±0.15	A	Length L	P
		MIN	MAX							
SPCK031015	M3×9.0	1	1.5	5	4.95	0.9	1.0	6.6	9	
SPCK031530	M3×10.5	1.5	3	5	4.95	1.3	1.4	7	9.5	4.8
SPCK033060	M3×12	3	6	5	4.95	1.3	1.4	7	10.5	
SPCK041030	M4×10.5	1	3			0.9	1.0	7.6	10.5	
SPCK043050	M4×12	3	5	6	5.95	1.3	1.4	8	12	5.4
SPCK045070	M4×14	5	7			1.3	1.4	8	14	
SPCK051540	M5×14	1.5	4			1.5			14	
SPCK054065	M5×17	4	6.5	7	6.95	1.5	1.6	9.6	17	8
SPCK056590	M5×20	6.5	9			1.5			20	
SPCK061530	M6×16	1.5	4			1.5			16	
SPCK063065	M6×19	4	6.5	9	8.95	1.5	1.6	12	16.5	10
SPCK066590	M6×22	6.5	9.0			1.5			22	
SPCK081540	M8×18	1.5	4			1.5			18	
SPCK084065	M8×21	4.0	6.5	11	10.95	1.5	1.6	14	21	11
SPCK086590	M8×24	6.5	9.0			1.5			24	
SPCK101540	M10×22	1.5	4			1.5			22	
SPCK104075	M10×25	4.0	7.5	13	12.95	1.5	1.6	16	25	15
SPCK1075105	M10×28	7.5	10.5			1.5			28	
SPCK121745	M12×26	1.7	4.5			1.7			26	
SPCK124575	M12×29	4.5	7.5	16	15.95	1.7	1.8	19	29	17.5
SPCK1275105	M12×32	7.5	10.5			1.7			32	
SPCK143045	M14×31.5	3.0	4.5			3.0	3.1	23.7	31.5	
SPCK144560	M14×33	4.5	6.0	18	17.95	3.5	3.6	24	33	21.8
SPCK146090	M14×36	6.0	9.0			3.5	3.6	24	36	

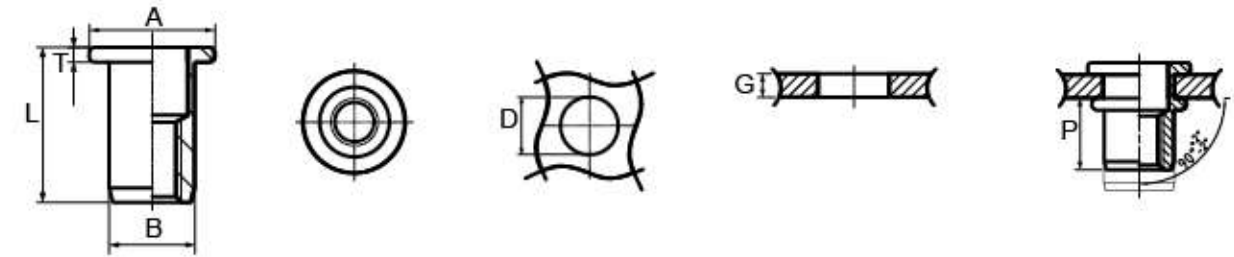
Rivet Nut

Product Feature:

1. Very low head projection prevents damage to surface of panel
2. can be used on soft material (Aluminum, plastic.....)
3. Increased turning resistance

Round , Plain , Flat Head

Material(Steel)



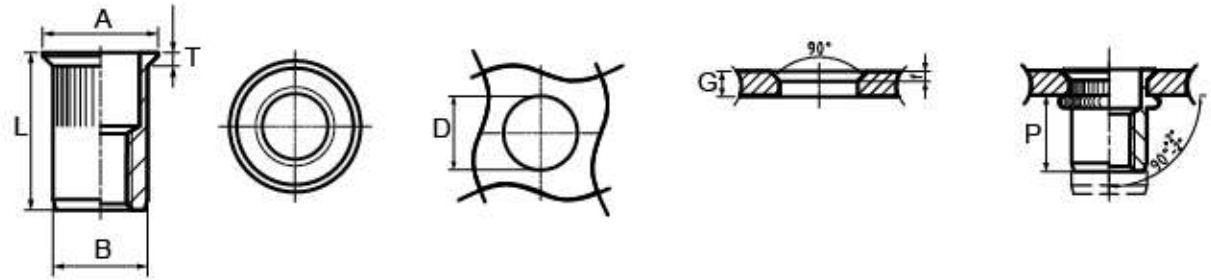
Part No	size	Grip range G		Hole Size D	B	T±0.15	A	Length L	P
		MIN	MAX						
SPFK030515	M3×9.0	0.5	1.5	5	4.95			9	
SPFK031530	M3×10	1.5	3	5	4.95	1.0	7.5	9.5	4.8
SPFK033060	M3×13	3	6	5	4.95			10.5	
SPFK040520	M4×10.5	0.5	2					10.5	
SPFK042040	M4×12	2	4	6	5.95	1.0	9.0	12	5.4
SPFK044060	M4×14	4	6					14	
SPFK050530	M5×14	0.5	3					14	
SPFK053055	M5×17	3	5.5	7	6.95	1.0	10	17	8
SPFK055580	M5×20	5.5	8.0					20	
SPFK060530	M6×16	0.5	3.0					16	
SPFK063055	M6×19	3.0	5.5	9	8.95	1.5	13	19	10
SPFK065580	M6×22	5.5	8.0					22	
SPFK080530	M8×18	0.5	3.0					18	
SPFK083065	M8×22	3.0	6.5	11	10.95	1.5	16	22	11
SPFK0865105	M8×24	6.5	10.5					24	
SPFK101035	M10×23	1.0	3.5					23	
SPFK103075	M10×28	3.0	7.5	13	12.95	2.0	19	28	15
SPFK1075105	M10×32	7.5	10.5					32	
SPFK121040	M12×27	1.0	4.0					27	
SPFK124070	M12×30	4.0	7.0	16	15.95	2.0	23	30	17.5
SPFK1270100	M12×33	7.0	10					33	
SPFK141045	M14×34	1.0	4.5					34	
SPFK144560	M14×36	4.5	6.0	18	17.95	2.5	24	36	21.8
SPFK146090	M14×39	6.0	9.0					39	

Rivet Nut

Product Feature: **Round, Knurled, Countersunk Head**

- 1. Increased turning resistance
- 2. can be used on soft material (Aluminum, plastic.....)
- 3. Increased turning resistance

Material(Steel)



Part No	size	Grip range G		Hole Size D	B	f	T±0.15	A	Length L	P
		MIN	MAX							
SKCK031535	M3×11	1.5	3.5	5	4.95	1.0	1.1	7	11	6
SKCK0415325	M4×11	1.5	3.25	6	5.95	1.2	1.3	8	11	6.3
SKCK0432550	M4×13	3.25	5			1.2			13	
SKCK051020	M5×12	1	2	7	6.95	1.0	1.5	10	12	8.5
SKCK053050	M5×15	3	5			1.4			15	
SKCK061530	M6×15	1.5	3	9	8.95	1.5	1.6	11	15	10
SKCK063045	M6×17	3	4.5			1.5			17	
SKCK081530	M8×17	1.5	3			1.4	1.5	13	17	
SKCK083045	M8×18	3	4.5	11	10.95	2.0	2.1	14	18	11.5
SKCK084575	M8×20	4.5	7.5			2.0	2.1	14	20	
SKCK101530	M10×21	1.5	3			1.4	1.5	15	21	
SKCK103045	M10×22	3	4.5	13	12.95	2.0	2.1	16	22	15
SKCK104560	M10×24	4.5	6			2.0	2.1	16	24	
SKCK121550	M12×26	1.5	5	15	15.95	2.0	2	18	26	17.5

P value is only for reference
unit: millimeter

The standard supplied surface treatment is 8µ Zinc with clear passivate (ROHS compliant) . Other finishes are available on request.

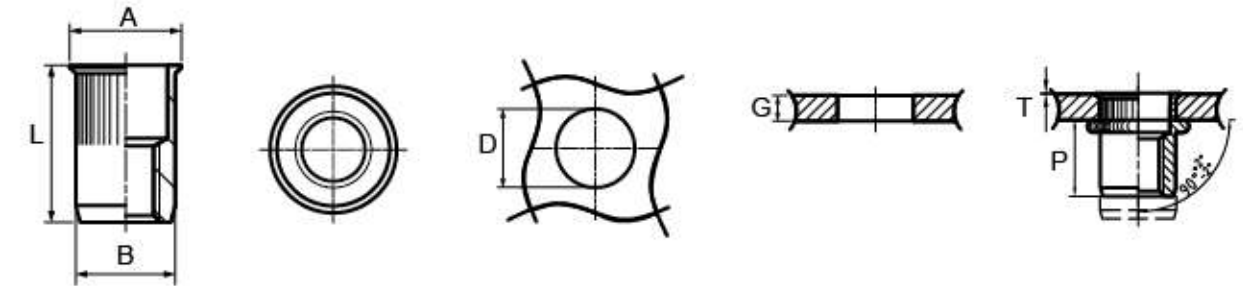
For special applications are available on request.

Rivet Nut

Product Feature: **Round, Knurled, Reduced Head**

- 1. Very low head projection prevents damage to surface of panel
- 2. can be used on soft material (Aluminum, plastic.....)
- 3. Increased turning resistance

Material(Steel)



Part No	size	Grip range G		Hole Size D	B	T±0.15	A	Length L	P
		MIN	MAX						
XCTR030715	M3×8	0.7	1.5	5	4.95	0.4	6	8	6
XCTR031530	M3×10	1.5	3.0	5	4.95	0.4	6	10	6
XCTR040525	M4×10	0.5	2.5	6	5.95	0.4	7	10	6
XCTR042540	M4×12	2.5	4.0					12	
XCTR051025	M5×12	1	2.5	7	6.95	0.4	8	12	7.6
XCTR052040	M5×14	2	4					14	
XCTR060830	M6×13	0.8	3.0					13	
XCTR063045	M6×15	3.0	4.5	9	8.95	0.4	10	15	9
XCTR064560	M6×17	4.5	6.0					17	
XCTR080830	M8×17	0.8	3					17	
XCTR083045	M8×19	3	4.5	11	10.95	0.5	12	19	12
XCTR084560	M8×21	4.5	6.0					21	
XCTR100830	M10×21	0.8	3					21	
XCTR103045	M10×22	3	4.5	13	12.95	0.5	14	22	14.5
XCTR104560	M10×23	4.5	6					23	
XCTR120830	M12×24	0.8	3					24	
XCTR123045	M12×26	3	4.5	16	15.95	0.5	17	26	18
XCTR124560	M12×27	4.5	6.0					27	

P value is only for reference
unit: millimeter

The standard supplied surface treatment is 8µ Zinc with clear passivate (ROHS compliant) . Other finishes are available on request.

For special applications are available on request.

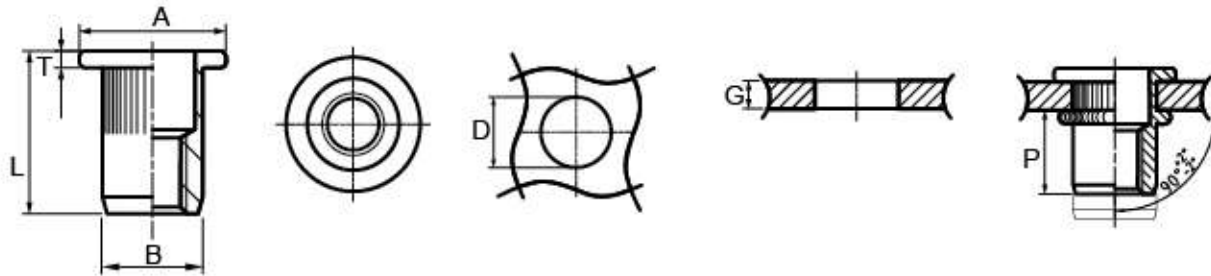
Rivet Nut

Product Feature:

1. Increased turning resistance
2. can be used on soft material (Aluminum, plastic.....)
3. Increased turning resistance

Round, Knurled , Flat Head

Material(Steel)



Part No	size	Grip range G		Hole Size D	B	T±0.15	A	Length L	P
		MIN	MAX						
RT030515	M3×9.0	0.5	1.5	5	4.95			9	
RT031530	M3×10	1.5	3	5	4.95	1.0	7.5	9.5	4.8
RT033060	M3×13	3	6	5	4.95			10.5	
RT040520	M4×10.5	0.5	2					10.5	
RT042040	M4×12	2	4	6	5.95	1.0	9.0	12	5.4
RT044060	M4×14	4	6					14	
RT050530	M5×14	0.5	3					14	
RT053055	M5×17	3	5.5	7	6.95	1.0	10	17	8
RT055580	M5×20	5.5	8.0					20	
RT060530	M6×16	0.5	3.0					16	
RT063055	M6×19	3.0	5.5	9	8.95	1.5	13	19	10
RT065580	M6×22	5.5	8.0					22	
RT080530	M8×18	0.5	3.0					18	
RT083065	M8×22	3.0	6.5	11	10.95	1.5	16	22	11
RT0865105	M8×24	6.5	10.5					24	
RT101035	M10×23	1.0	3.5					23	
RT103075	M10×28	3.0	7.5	13	12.95	2.0	19	28	15
RT1075105	M10×32	7.5	10.5					32	
RT121040	M12×27	1.0	4.0					27	
RT124070	M12×30	4.0	7.0	16	15.95	2.0	23	30	17.5
RT1270100	M12×33	7.0	10					33	
RT141045	M14×34	1.0	4.5					34	
RT144560	M14×36	4.5	6.0	18	17.95	2.5	24	36	21.8
RT146090	M14×39	6.0	9.0					39	

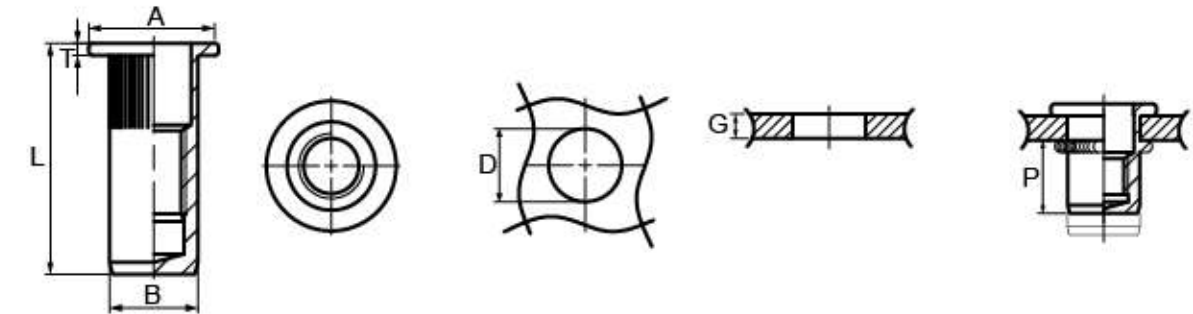
Rivet Nut

Product Feature:

1. Increased turning resistance
2. can be used on soft material (Aluminum, plastic.....)
3. Increased turning resistance

Round, Knurled , Flat Head, Closed

Material(Steel)



Part No	size	Grip range G		Hole Size D	B	T±0.15	A	Length L	P
		MIN	MAX						
SKFB030530	M3	0.5	3	5	4.9	1	7.5	14	9
SKFB033060	M3	3	6	5	4.9	1	7.5	17	9
SKFB040530	M4	0.5	3	6	5.9	1	9	17	10
SKFB043060	M4	3	6	6	5.9	1	9	19	10
SKFB050530	M5	0.5	3	7	6.9	1	10	20	14
SKFB053055	M5	3	5.5	7	6.9	1	10	23	14
SKFB055580	M5	5.5	8	7	6.9	1	10	26	14
SKFB060530	M6	0.5	3	9	8.9	1.5	13	23	17
SKFB063055	M6	3	5.5	9	8.9	1.5	13	26	17
SKFB065580	M6	5.5	8	9	8.9	1.5	13	29	17
SKFB080530	M8	0.5	3	11	10.9	1.5	16	26	19
SKFB083055	M8	3	5.5	11	10.9	1.5	16	29	19
SKFB085580	M8	5.5	8	11	10.9	1.5	16	32	19
SKFB0808105	M8	8	10.5	11	10.9	1.5	16	35	19
SKFB101035	M10	1	3.5	13	12.9	2	19	33	25
SKFB103560	M10	3.5	6	13	12.9	2	19	36	25
SKFB106085	M10	6	8.5	13	12.9	2	19	39	25
SKFB1085110	M10	8.5	11	13	12.9	2	19	42	25
SKFB121040	M12	1	4	16	15.9	2	23	39	30
SKFB124070	M12	4	7	16	15.9	2	23	42	30
SKFB1270100	M12	7	10	16	15.9	2	23	45	30
SKFB141545	M14	1.5	4.5	18	17.9	2.5	24	47	35
SKFB144575	M14	4.5	7.5	18	17.9	2.5	24	50	35

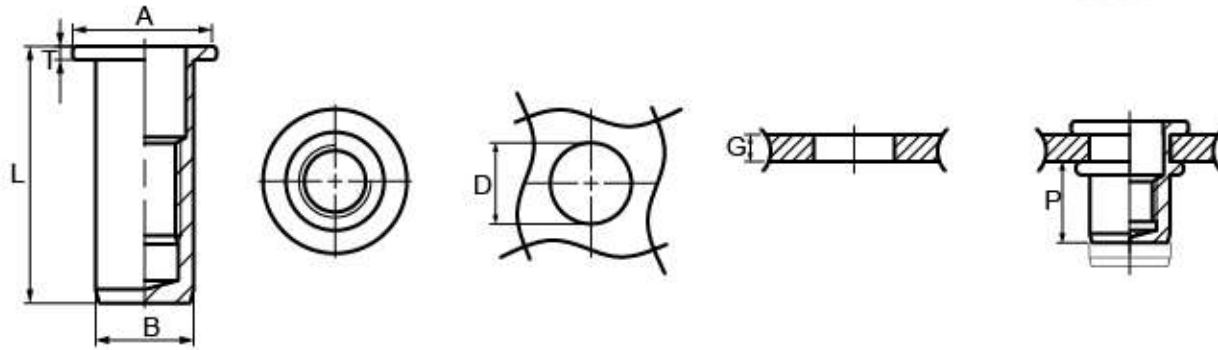
Rivet Nut

Product Feature:

Round, Plain, Flat Head, Closed

- 1. Increased turning resistance
- 2. can be used on soft material (Aluminum, plastic.....)
- 3. Increased turning resistance

Material(Steel)



Part No	size	Grip range G		Hole Size D	B	T±0.15	A	Length L	P
		MIN	MAX						
SPFB030530	M3	0.5	3	5	4.9	1	7.5	14	9
SPFB033060	M3	3	6	5	4.9	1	7.5	17	9
SPFB040530	M4	0.5	3	6	5.9	1	9	17	10
SPFB043060	M4	3	6	6	5.9	1	9	19	10
SPFB050530	M5	0.5	3	7	6.9	1	10	20	14
SPFB053055	M5	3	5.5	7	6.9	1	10	23	14
SPFB055580	M5	5.5	8	7	6.9	1	10	26	14
SPFB060530	M6	0.5	3	9	8.9	1.5	13	23	17
SPFB063055	M6	3	5.5	9	8.9	1.5	13	26	17
SPFB065580	M6	5.5	8	9	8.9	1.5	13	29	17
SPFB080530	M8	0.5	3	11	10.9	1.5	16	26	19
SPFB083055	M8	3	5.5	11	10.9	1.5	16	29	19
SPFB085580	M8	5.5	8	11	10.9	1.5	16	32	19
SPFB0808105	M8	8	10.5	11	10.9	1.5	16	35	19
SPFB101035	M10	1	3.5	13	12.9	2	19	33	25
SPFB103560	M10	3.5	6	13	12.9	2	19	36	25
SPFB106085	M10	6	8.5	13	12.9	2	19	39	25
SPFB1085110	M10	8.5	11	13	12.9	2	19	42	25
SPFB121040	M12	1	4	16	15.9	2	23	39	30
SPFB124070	M12	4	7	16	15.9	2	23	42	30
SPFB1270100	M12	7	10	16	15.9	2	23	45	30
SPFB141545	M14	1.5	4.5	18	17.9	2.5	24	47	35
SPFB144575	M14	4.5	7.5	18	17.9	2.5	24	50	35

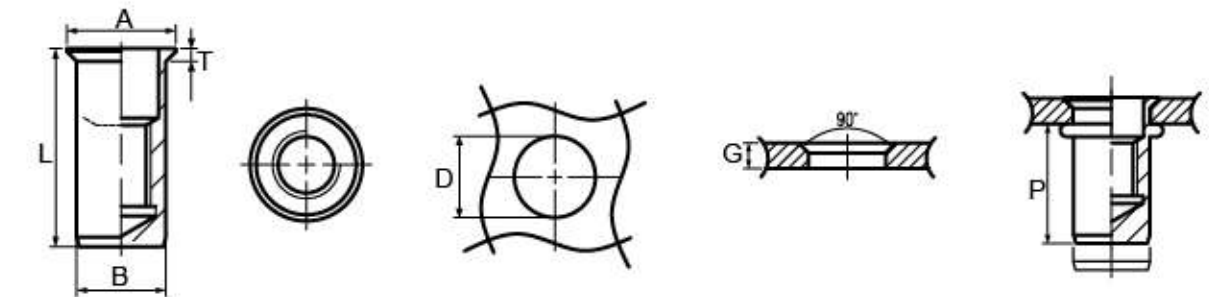
Rivet Nut

Product Feature:

Round, Plain, Countersunk, Closed

- 1. Increased turning resistance
- 2. can be used on soft material (Aluminum, plastic.....)
- 3. Increased turning resistance

Material(Steel)

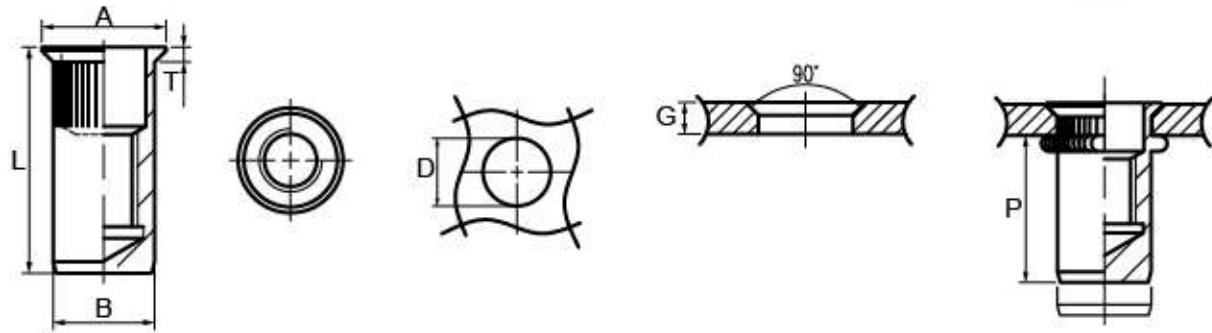


Part No	size	Grip range G		Hole Size D	B	T±0.15	A	Length L	P
		MIN	MAX						
SPCB031030	M3	1	3	5	4.9	1	7.5	14	9
SPCB033060	M3	3	6	5	4.9	1	7.5	16	9
SPCB041040	M4	1	4	6	5.9	1	9	16	10
SPCB044070	M4	4	7	6	5.9	1	9	19	10
SPCB051540	M5	1.5	4	7	6.9	1	10	20	14
SPCB054065	M5	4	6.5	7	6.9	1	10	23	14
SPCB056590	M5	6.5	9	7	6.9	1	10	26	14
SPCB061540	M6	1.5	4	9	8.9	1.5	13	23	17
SPCB064065	M6	4	6.5	9	8.9	1.5	13	26	17
SPCB066590	M6	6.5	9	9	8.9	1.5	13	29	17
SPCB081540	M8	1.5	4	11	10.9	1.5	16	26	19
SPCB084065	M8	1	6.5	11	10.9	1.5	16	29	19
SPCB086590	M8	6.5	9	11	10.9	1.5	16	32	19
SPCB101540	M10	1.5	4	13	12.9	2	19	32	25
SPCB104065	M10	1	6.5	13	12.9	2	19	35	25
SPCB106590	M10	6.5	9	13	12.9	2	19	38	25
SPCB121745	M12	1.7	4.5	16	15.9	2	23	38	30
SPCB124575	M12	4.5	7.5	16	15.9	2	23	41	30
SPCB1275105	M12	7.5	10.5	16	15.9	2	23	44	30
SPCB143060	M14	3	6	18	17.9	2.5	24	47	35
SPCB146090	M14	6	9	18	17.9	2.5	24	50	35

Rivet Nut

Product Feature: **Round, Knurled, Countersunk, Closed**
Material(Steel)

1. Increased turning resistance
2. can be used on soft material (Aluminum, plastic.....)
3. Increased turning resistance

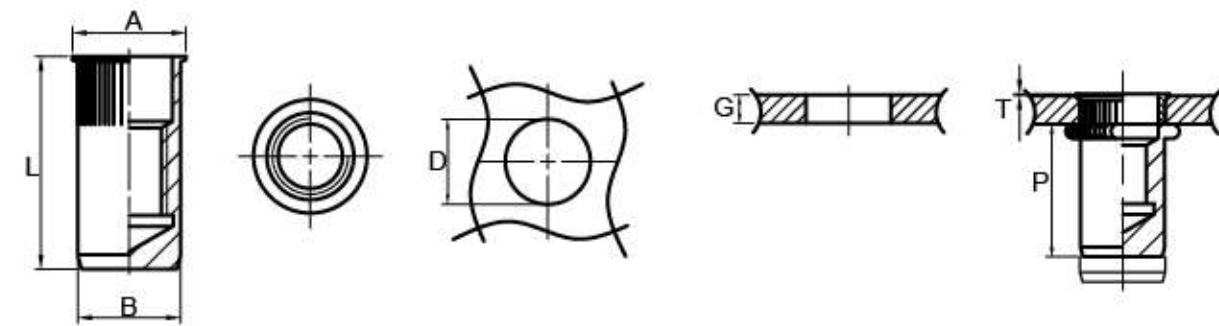


Part No	size	Grip range G		Hole Size D	B	T±0.15	A	Length L	P
		MIN	MAX						
SKCB031030	M3	1	3	5	4.9	1	7.5	14	9
SKCB033060	M3	3	6	5	4.9	1	7.5	16	9
SKCB041040	M4	1	4	6	5.9	1	9	16	10
SKCB044070	M4	4	7	6	5.9	1	9	19	10
SKCB051540	M5	1.5	4	7	6.9	1	10	20	14
SKCB054065	M5	4	6.5	7	6.9	1	10	23	14
SKCB056590	M5	6.5	9	7	6.9	1	10	26	14
SKCB061540	M6	1.5	4	9	8.9	1.5	13	23	17
SKCB064065	M6	4	6.5	9	8.9	1.5	13	26	17
SKCB066590	M6	6.5	9	9	8.9	1.5	13	29	17
SKCB081540	M8	1.5	4	11	10.9	1.5	16	26	19
SKCB084065	M8	1	6.5	11	10.9	1.5	16	29	19
SKCB086590	M8	6.5	9	11	10.9	1.5	16	32	19
SKCB101540	M10	1.5	4	13	12.9	2	19	32	25
SKCB104065	M10	1	6.5	13	12.9	2	19	35	25
SKCB106590	M10	6.5	9	13	12.9	2	19	38	25
SKCB121745	M12	1.7	4.5	16	15.9	2	23	38	30
SKCB124575	M12	4.5	7.5	16	15.9	2	23	41	30
SKCB1275105	M12	7.5	10.5	16	15.9	2	23	44	30
SKCB143060	M14	3	6	18	17.9	2.5	24	47	35
SKCB146090	M14	6	9	18	17.9	2.5	24	50	35

Rivet Nut

Product Feature: **Round, Knurled, Reduced Head, Closed**
Material(Steel)

1. Increased turning resistance
2. can be used on soft material (Aluminum, plastic.....)
3. Increased turning resistance



Part No	size	Grip range G		Hole Size D	B	T±0.15	A	Length L	P
		MIN	MAX						
SKRB030730	M3	0.7	3	5	4.9	1	7.5	14	10
SKRB040725	M4	0.5	3	6	5.9	1	9	17	10
SKRB042540	M4	3	6	6	5.9	1	9	19	10
SKRB050725	M5	0.5	3	7	6.9	1	10	20	14
SKRB052540	M5	3	5.5	7	6.9	1	10	23	14
SKRB060830	M6	0.5	3	9	8.9	1.5	13	23	17
SKRB063060	M6	3	5.5	9	8.9	1.5	13	26	17
SKRB080830	M8	0.5	3	11	10.9	1.5	16	26	19
SKRB083060	M8	3	5.5	11	10.9	1.5	16	29	19
SKRB100830	M10	1	3.5	13	12.9	2	19	33	25
SKRB103060	M10	3.5	6	13	12.9	2	19	36	25
SKRB120830	M12	1	4	16	15.9	2	23	39	30
SKRB123060	M12	4	7	16	15.9	2	23	42	30

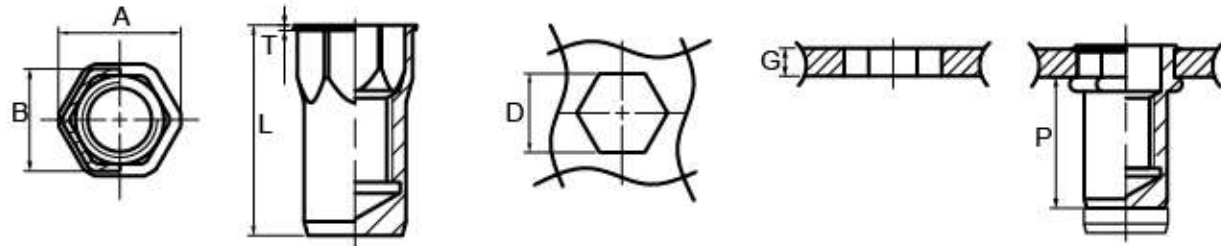
Rivet Nut

Product Feature:

- 1. Increased turning resistance
- 2. can be used on soft material (Aluminum, plastic.....)
- 3. Increased turning resistance

Half Hex, Reduced Head, Closed

Material(Steel)



Part No	size	Grip range G		Hole Size D	B	T±0.15	A	Length L	P
		MIN	MAX						
SHRB040525	M4	0.5	2.5	6	5.9	0.5	7.3	15	11
SHRB050530	M5	0.5	3	7	6.9	0.6	8.4	17	12
SHRB060530	M6	0.5	3	9	8.9	0.6	10.6	20	15
SHRB080530	M8	0.5	3	11	10.9	0.6	12.5	23	18
SHRB101035	M10	1	3.5	13	12.9	0.8	15	27	21
SHRB121040	M12	1	4	16	15.9	0.8	18	32	25
SHFB040525	M4	0.5	2.5	6	5.9	1	8	16	11
SHFB050530	M5	0.5	3	7	6.9	1	9	18	12
SHFB060530	M6	0.5	3	9	8.9	1.5	11	21	15
SHFB080530	M8	0.5	3	11	10.9	1.5	14	24	18
SHFB101035	M10	1	3.5	13	12.9	2	16	28	21
SHFB121040	M12	1	4	16	15.9	2	20	33	25

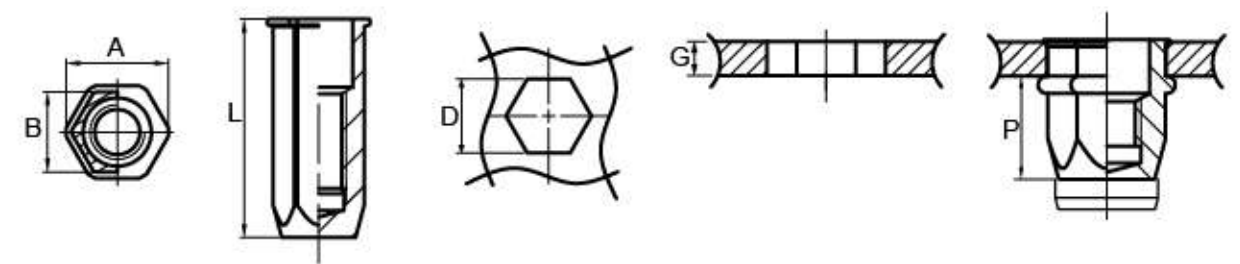
Rivet Nut

Product Feature:

- 1. Increased turning resistance
- 2. can be used on soft material (Aluminum, plastic.....)
- 3. Increased turning resistance

Full Hex, Reduced Head Closed

Material(Steel)

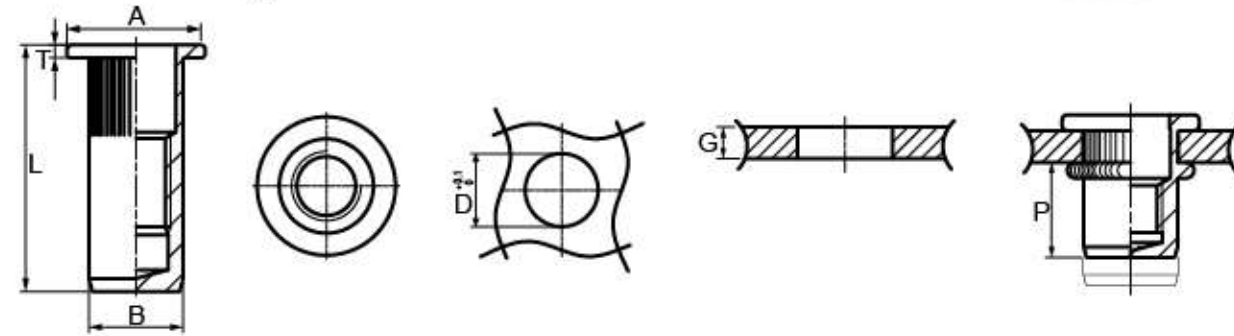


Part No	size	Grip range G		Hole Size D	B	T±0.15	A	Length L	P
		MIN	MAX						
SFRB040520	M4	0.5	2	6	5.9	0.5	7.5	17	13
SFRB050530	M5	0.5	3	7	6.9	0.6	9	20	15
SFRB060530	M6	0.5	3	9	8.9	0.6	11	23	17
SFRB080730	M8	0.7	3	11	10.9	0.7	13.4	28	22
SFRB101040	M10	1	4	13	12.9	0.8	16	33	25

Rivet Nut

Product Feature: **Round, Knurled , Flat Head, Closed**
Material(Stainless Steel)

- 1. Increased turning resistance
- 2. can be used on soft material (Aluminum, plastic.....)
- 3. Increased turning resistance

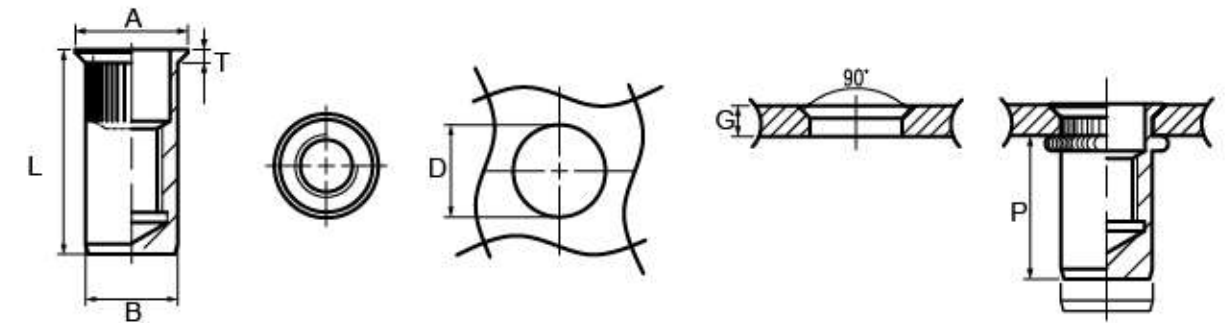


Part No	size	Grip range G		Hole Size D	B	T±0.15	A	Length L	P
		MIN	MAX						
BKFB030725	M3	0.7	2.5	5	4.9	1	7	14.7	10.2
BKFB040725	M4	0.7	2.5	6	5.9	1	8	15.6	11
BKFB042535	M4	2.5	3.5	6	5.9	1	8	16.7	11
BKFB050730	M5	0.7	3	7	6.9	1	9	19	14
BKFB053050	M5	3	5	7	6.9	1	9	21	14
BKFB060830	M6	0.8	3	9	8.9	1.5	11	20	13.5
BKFB063060	M6	3	6	9	8.9	1.5	11	23	13.5
BKFB080830	M8	0.8	3	11	10.9	1.5	14	23	16.5
BKFB083060	M8	3	6	11	10.9	1.5	14	26	16.5
BKFB100830	M10	0.8	3	13	12.9	2	16	30	22
BKFB103060	M10	3	6	13	12.9	2	16	32.6	22
BKFB120830	M12	0.8	3	16	15.9	2	20	33	26
BKFB123060	M12	3	6	16	15.9	2	20	36	26

Rivet Nut

Product Feature: **Round, Knurled , Countersunk, Closed**
Material(Stainless Steel)

- 1. Increased turning resistance
- 2. can be used on soft material (Aluminum, plastic.....)
- 3. Increased turning resistance

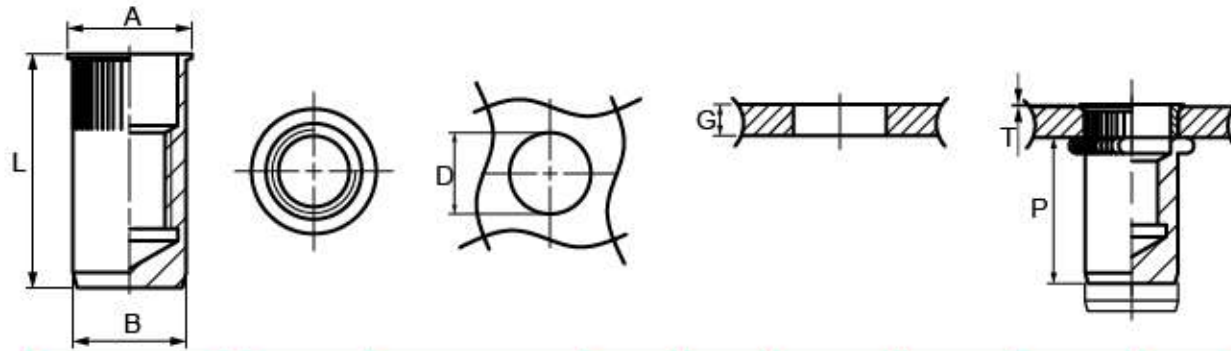


Part No	size	Grip range G		Hole Size D	B	T±0.15	A	Length L	P
		MIN	MAX						
BKCB031330	M3	1.3	3	5	4.9	1	7	13	10
BKCB041330	M4	1.3	3	6	5.9	1	8	15	11
BKCB043050	M4	3	5	6	5.9	1	8	16	11
BKCB051330	M5	1.3	3	7	6.9	1	9	18	13
BKCB053050	M5	3	5	7	6.9	1	9	19	13
BKCB061540	M6	1.5	4	9	8.9	1	11	19	13
BKCB064060	M6	4	6	9	8.9	1	11	21	13
BKCB081540	M8	1.5	4	11	10.9	1.5	14	22	16
BKCB084060	M8	4	6	11	10.9	1.5	14	24	16
BKCB101545	M10	1.5	4.5	13	12.9	1.5	16	29	22
BKCB104560	M10	4.5	6	13	12.9	1.5	16	30	22
BKCB121545	M12	1.5	4.5	16	15.9	1.5	19	33	26
BKCB154560	M12	4.5	6	16	15.9	1.5	19	35	26

Rivet Nut

Product Feature: **Round, Knurled, Reduced Head, Closed**
Material(Stainless Steel)

- 1. Increased turning resistance
- 2. can be used on soft material (Aluminum, plastic.....)
- 3. Increased turning resistance

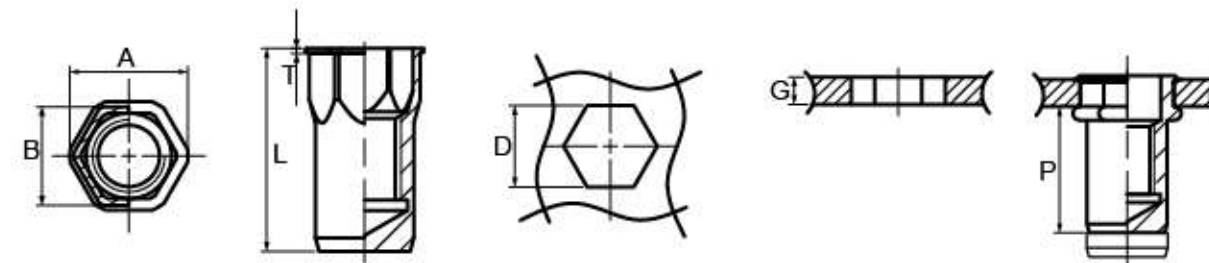


Part No	size	Grip range G		Hole Size D	B	T±0.15	A	Length L	P
		MIN	MAX						
BKRB030725	M3	0.7	2.5	5	4.9	0.4	6	14	10
BKRB040735	M4	0.7	3.5	6	5.9	0.4	7	17	12
BKRB050840	M5	0.8	4	7	6.9	0.4	8	20	14
BKRB060830	M6	0.8	3	9	8.9	0.5	10	19	14
BKRB063060	M6	3	6	9	8.9	0.5	10	22	14
BKRB080830	M8	0.8	3	11	10.9	0.5	12	22	17
BKRB083060	M8	3	6	11	10.9	0.5	12	25	17
BKRB100830	M10	0.8	3	13	12.9	0.5	14	28	22
BKRB103060	M10	3	6	13	12.9	0.5	14	31	22
BKRB120830	M12	0.8	3	16	15.9	0.5	17	32	26
BKRB123060	M12	3	6	16	15.9	0.5	17	35	26

Rivet Nut

Product Feature: **Half Hex, Reduced Head, Closed**
Material(Stainless Steel)

- 1. Increased turning resistance
- 2. can be used on soft material (Aluminum, plastic.....)
- 3. Increased turning resistance



Part No	size	Grip range G		Hole Size D	B	T±0.15	A	Length L	P
		MIN	MAX						
BHRB040525	M4	0.5	2.5	6	5.9	0.5	7.3	15	11
BHRB050530	M5	0.5	3	7	6.9	0.6	8.4	17	12
BHRB060530	M6	0.5	3	9	8.9	0.6	10.6	20	15
BHRB080530	M8	0.5	3	11	10.9	0.6	12.5	23	18
BHRB101035	M10	1	3.5	13	12.9	0.8	15	27	21
BHRB121040	M12	1	4	16	15.9	0.8	18	32	25

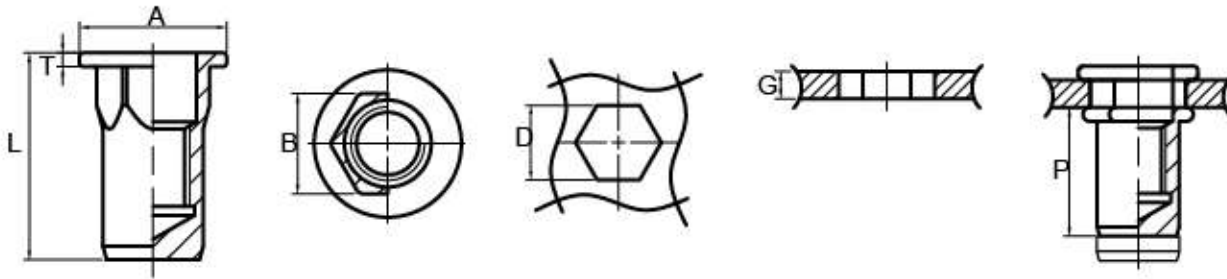
Rivet Nut

Product Feature:

1. Increased turning resistance
2. can be used on soft material (Aluminum, plastic.....)
3. Increased turning resistance

Half Hex, Flat Head, Closed

Material(Stainless Steel)



Part No	size	Grip range G		Hole Size D	B	T±0.15	A	Length L	P
		MIN	MAX						
BHFB040525	M4	0.5	2.5	6	5.9	1	8	16	11
BHFB050530	M5	0.5	3	7	6.9	1	9	18	12
BHFB060530	M6	0.5	3	9	8.9	1.5	11	21	15
BHFB080530	M8	0.5	3	11	10.9	1.5	14	24	18
BHFB101035	M10	1	3.5	13	12.9	2	16	28	21
BHFB121040	M12	1	4	16	15.9	2	20	33	25

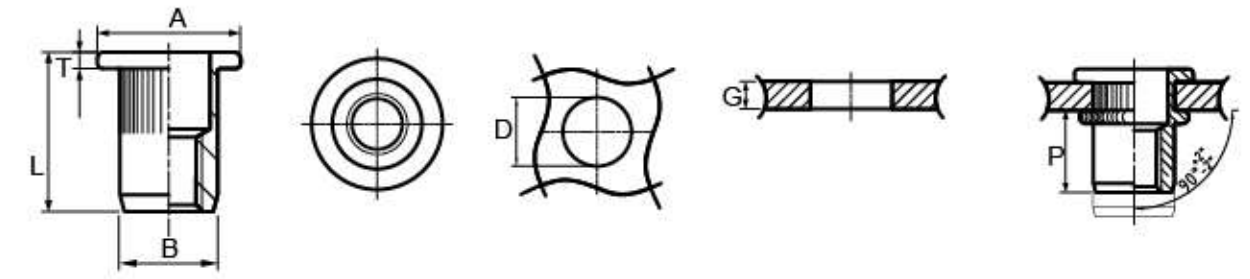
Rivet Nut

Product Feature:

1. Increased turning resistance
2. can be used on soft material (Aluminum, plastic.....)
3. Increased turning resistance

Round, Knurled , Flat Head

Material(Aluminium)

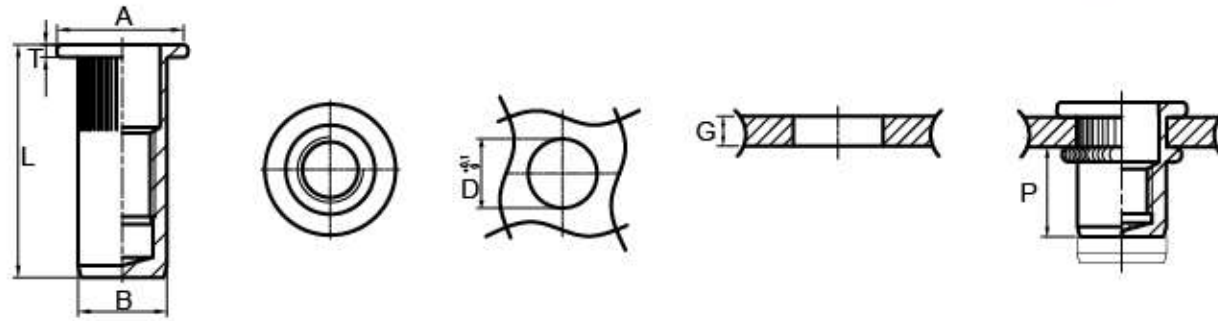


Part No	size	Grip range G		Hole Size D	B	T±0.15	A	Length L
		MIN	MAX					
AKFK030525	M3×10.5	0.5	2.5	5	4.9	0.9	7	10.5
AKFK032535	M3×11.5	2.5	3.5	5	4.9	0.9	7	11.5
AKFK040530	M4×11	0.5	3	6	5.9	1	9	11
AKFK043045	M4×14	3	4.5	6	5.9	1	9	14
AKFK050530	M5×13	0.5	3	7	6.9	1	10	13
AKFK053055	M5×16	3	5.5	7	6.9	1	10	16
AKFK055580	M5×19	5.5	8	7	6.9	1	10	19
AKFK060530	M6×16	0.5	3	9	8.9	1.5	12	16
AKFK063055	M6×18.5	3	5.5	9	8.9	1.5	12	18.5
AKFK065580	M6×21	5.5	8	9	8.9	1.5	12	21
AKFK080530	M8×17.5	0.5	3	11	10.9	1.5	15	17.5
AKFK083055	M8×20	3	5.5	11	10.9	1.5	15	20
AKFK085580	M8×22.5	5.5	8	11	10.9	1.5	15	22.5
AKFK0880105	M8×25	8	10.5	11	10.9	1.5	15	25
AKFK100530	M10×19	0.5	3	13	12.9	2	16	19
AKFK103060	M10×24	3	6	13	12.9	2	16	24
AKFK106090	M10×27	6	9	13	12.9	2	16	27
AKFK1090120	M10×30	9	12	13	12.9	2	16	30
AKFK121040	M12×25	1	4	16	15.9	2	22	25
AKFK124070	M12×28	4	7	16	15.9	2	22	28
AKFK1270100	M12×31	7	10	16	15.9	2	22	31

Rivet Nut

Product Feature: **Round, Knurled, Flat Head, Closed**
Material(Aluminium)

- 1. Increased turning resistance
- 2. can be used on soft material (Aluminum, plastic.....)
- 3. Increased turning resistance

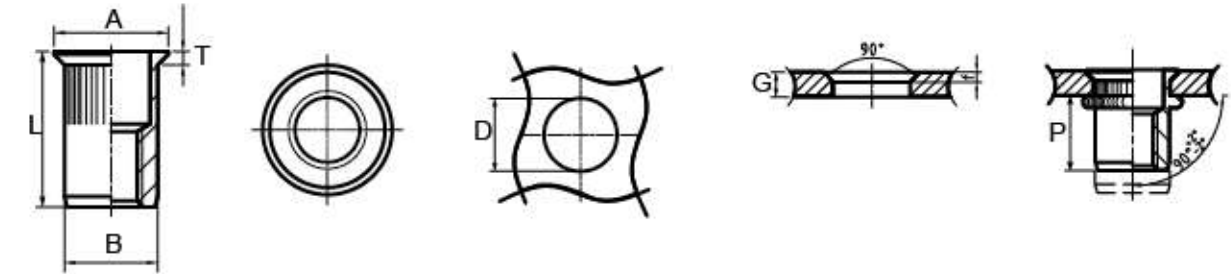


Part No	size	Grip range G		Hole Size D	B	T±0.15	A	Length L
		MIN	MAX					
AKFB030525	M3×15	0.5	2.5	5	4.9	0.9	7	15
AKFB032535	M3×16	2.5	3.5	5	4.9	0.9	7	16
AKFB040530	M4×16	0.5	3	6	5.9	1	9	16
AKFB043045	M4×19	3	4.5	6	5.9	1	9	19
AKFB050530	M5×18.5	0.5	3	7	6.9	1	10	18.5
AKFB053055	M5×21.5	3	5.5	7	6.9	1	10	21.5
AKFB055580	M5×24.5	5.5	8	7	6.9	1	10	24.5
AKFB060530	M6×21.5	0.5	3	9	8.9	1.5	12	21.5
AKFB063055	M6×24	3	5.5	9	8.9	1.5	12	24
AKFB065580	M6×26.5	5.5	8	9	8.9	1.5	12	26.5
AKFB080530	M8×26	0.5	3	11	10.9	1.5	15	26
AKFB083055	M8×28.5	3	5.5	11	10.9	1.5	15	28.5
AKFB085580	M8×31	5.5	8	11	10.9	1.5	15	31
AKFB0880105	M8×33.5	8	10.5	11	10.9	1.5	15	33.5
AKFB100530	M10×28	0.5	3	13	12.9	2	16	28
AKFB103060	M10×33	3	6	13	12.9	2	16	33
AKFB106090	M10×36	6	9	13	12.9	2	16	36
AKFB1090120	M10×39	9	12	13	12.9	2	16	39

Rivet Nut

Product Feature: **Round, Knurled, Countersunk Head**
Material(Aluminium)

- 1. Increased turning resistance
- 2. can be used on soft material (Aluminum, plastic.....)
- 3. Increased turning resistance



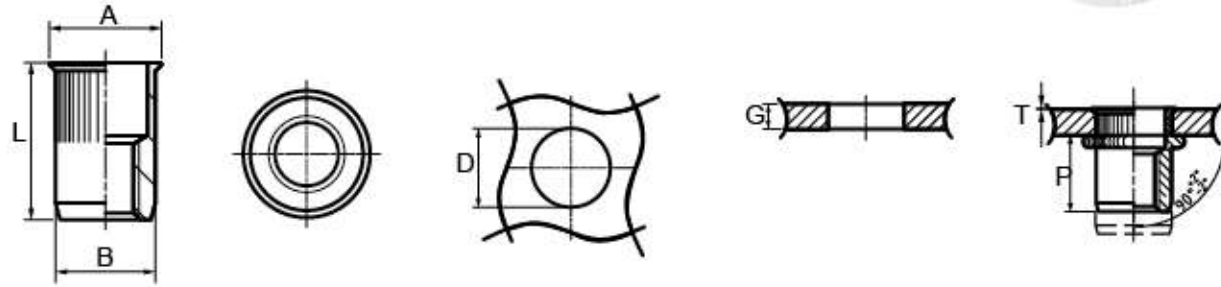
Part No	size	Grip range G		Hole Size D	B	T±0.15	A	Length L
		MIN	MAX					
AKCK031535	M3×11.5	1.5	3.5	5	4.9	1.5	7.5	11.5
AKCK033545	M3×12.5	3.5	4.5	5	4.9	1.5	7.5	12.5
AKCK041540	M4×12.5	1.5	4	6	5.9	1.5	8.5	12.5
AKCK044055	M4×15	4	5.5	6	5.9	1.5	8.5	15
AKCK051540	M5×13.5	1.5	4	7	6.9	1.5	9.5	13.5
AKCK054065	M5×16	4	6.5	7	6.9	1.5	9.5	16
AKCK056590	M5×18.5	6.5	9	7	6.9	1.5	9.5	18.5
AKCK061540	M6×15.5	1.5	4	9	8.9	1.5	11.5	15.5
AKCK064065	M6×18	4	6.5	9	8.9	1.5	11.5	18
AKCK066590	M6×20.5	6.5	9	9	8.9	1.5	11.5	20.5
AKCK081540	M8×18.5	1.5	4	11	10.9	1.5	13.5	18.5
AKCK084065	M8×21	4	6.5	11	10.9	1.5	13.5	21
AKCK086590	M8×23.5	6.5	9	11	10.9	1.5	13.5	23.5
AKCK102045	M10×21	2	4.5	13	12.9	1.8	14.5	21
AKCK104575	M10×24	4.5	7.5	13	12.9	1.8	14.5	24
AKCK1075105	M10×27	7.5	10.5	13	12.9	1.8	14.5	27
AKCK122045	M12×24.5	2	4.5	16	15.9	2	19	24.5
AKCK124575	M12×27.5	4.5	7.5	16	15.9	2	19	27.5
AKCK1275105	M12×31	7.5	10.5	16	15.9	2	19	31

Rivet Nut

Product Feature:

- 1. Increased turning resistance
- 2. can be used on soft material (Aluminum, plastic.....)
- 3. Increased turning resistance

Round , Knurled , Reduced Head
Material(Aluminium)



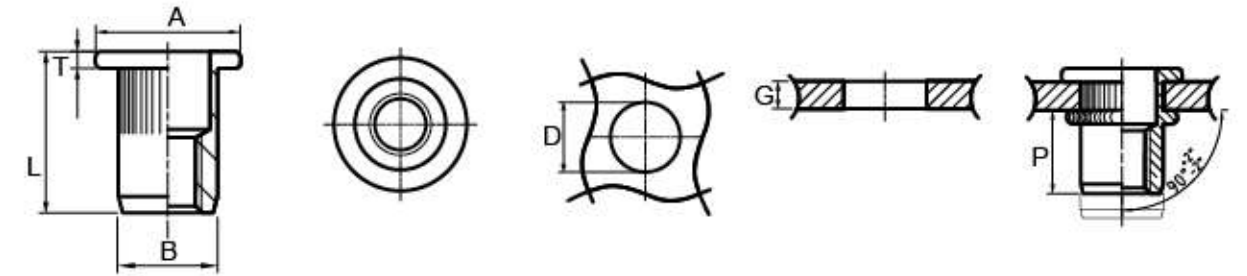
Part No	size	Grip range G		Hole Size D	B	T±0.15	A	Length L
		MIN	MAX					
AKRK030525	M3×9.5	0.5	2.5	5	4.9	0.8	6	9.5
AKRK040530	M4×10	0.5	3	6	5.9	0.8	7	10
AKRK050530	M5×11.5	0.5	3	7	6.9	0.8	8	11.5
AKRK060530	M6×14	0.5	3	9	8.9	1	10	14
AKRK080530	M8×15.5	0.5	3	11	10.9	1	13	15.5

Rivet Nut

Product Feature:

- 1. Increased turning resistance
- 2. can be used on soft material (Aluminum, plastic.....)
- 3. Increased turning resistance

Round, Knurled , Flat Head
Material(Stainless Steel)



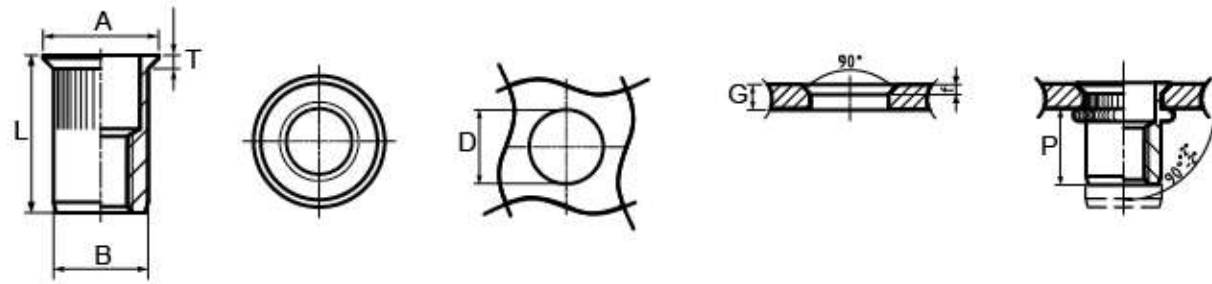
Part No	size	Grip range G		Hole Size D	B	T±0.15	A	Length L
		MIN	MAX					
BKFK040530	M4×11	0.5	0.5	6	5.9	1	9	11
BKFK043045	M4×14	3	3	6	5.9	1	9	14
BKFK050530	M5×13	0.5	0.5	7	6.9	1	10	13
BKFK053055	M5×16	3	3	7	6.9	1	10	16
BKFK055580	M5×19	5.5	5.5	7	6.9	1	10	19
BKFK060530	M6×16	0.5	0.5	9	8.9	1.5	12	16
BKFK063055	M6×18.5	3	3	9	8.9	1.5	12	18.5
BKFK080530	M8×17.5	0.5	0.5	11	10.9	1.5	15	17.5
BKFK083055	M8×20	3	3	11	10.9	1.5	15	20
BKFK100530	M10×19	0.5	0.5	13	12.9	2	16	19
BKFK103060	M10×24	3	3	13	12.9	2	16	24



Rivet Nut

Product Feature: **Round, Knurled, Countersunk Head**
Material(Stainless Steel)

- 1. Increased turning resistance
- 2. can be used on soft material (Aluminum, plastic.....)
- 3. Increased turning resistance



Part No	size	Grip range G		Hole Size D	B	T±0.15	A	Length L
		MIN	MAX					
BKCK031535	M3×11.5	1.5	3.5	5	4.9	1.5	7.5	11.5
BKCK033545	M3×12.5	3.5	4.5	5	4.9	1.5	7.5	12.5
BKCK041540	M4×12.5	1.5	4	6	5.9	1.5	8.5	12.5
BKCK051540	M5×13.5	1.5	4	7	6.9	1.5	9.5	13.5
BKCK054065	M5×16	4	6.5	7	6.9	1.5	9.5	16
BKCK061540	M6×15.5	1.5	4	9	8.9	1.5	11.5	15.5
BKCK064065	M6×18.5	4	6.5	9	8.9	1.5	11.5	18.5
BKCK081540	M8×18.5	1.5	4	11	10.9	1.5	13.5	18.5
BKCK084065	M8×21	4	6.5	11	10.9	1.5	13.5	21
BKCK102045	M10×21	2	4.5	13	12.9	1.8	15.5	21
BKCK104575	M10×24	4.5	7.5	13	12.9	1.8	15.5	24
BKCK122045	M12×24.5	2	4.5	16	15.9	2	19	24.5
BKCK124575	M12×27.5	4.5	7.5	16	15.9	2	19	27.5



Specification:
Stroke: 7mm
Grip range: M5 M6 M8 M10



M312 铆螺母枪
Grip range: M3-M12
Working pressure: 0.5-0.7Mpa
Pulling force: 19100N-26740N
Net weight: 2.25Kg
Stroke: 7mm



M310 铆螺母枪
Grip range: M3-M10
Working pressure: 0.5-0.7Mpa
Pulling force: 19100N-26740N
Net weight: 2.25Kg
Stroke: 7mm



Specification:
Stroke: 9mm
Grip range: M3 M4 M5 M6



Specification:
Stroke: 7mm
Grip range: M8 M10 M12